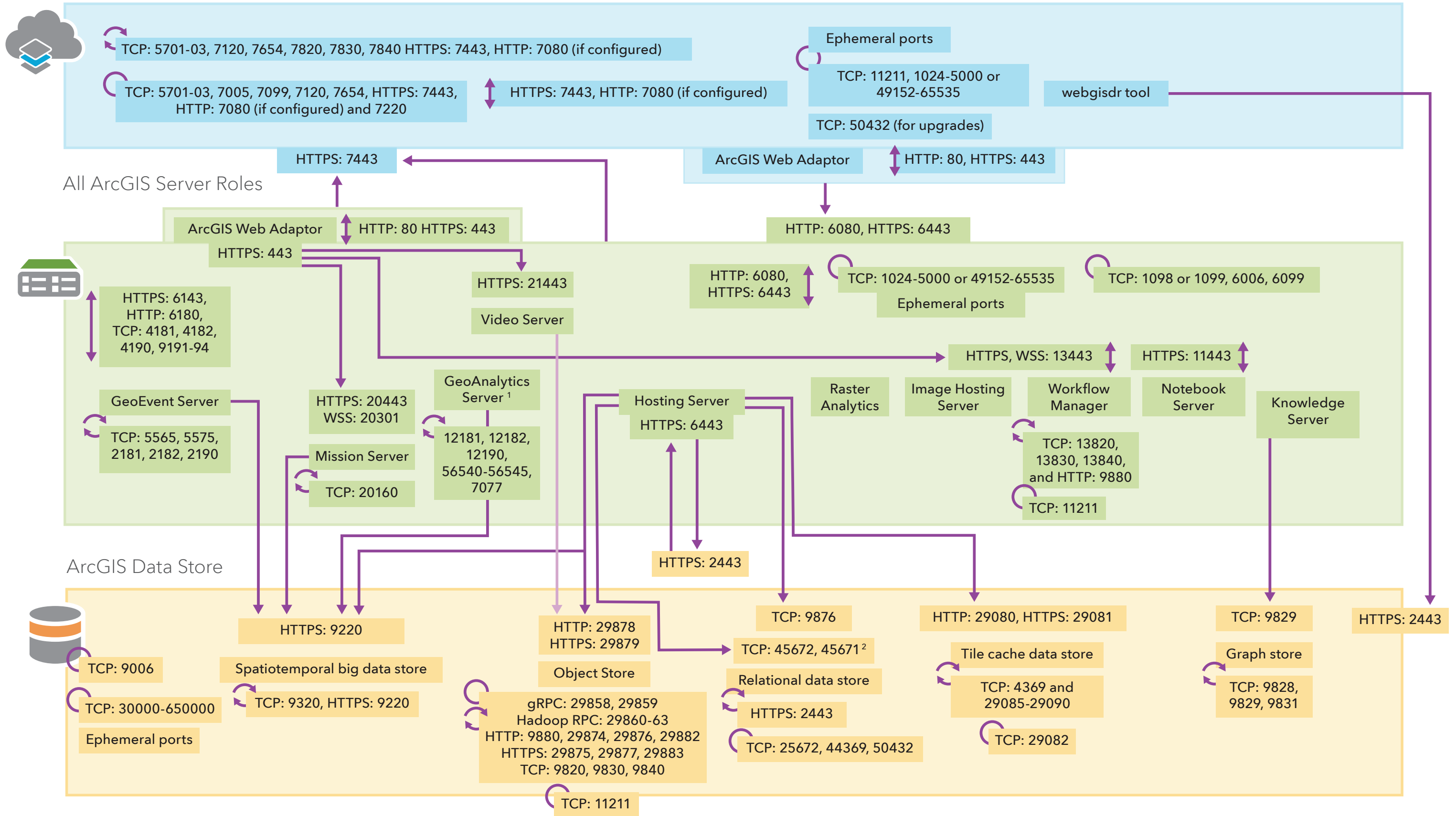


Portal for ArcGIS



¹ If GeoAnalytics tools output to the relational data store, the GeoAnalytics Server needs access to the relational data store through port 9876.

² These ports are also needed to communicate with federated ArcGIS Server sites that use webhooks.

○ Ports need to be available on individual machines. No external communication is needed.

↔ Ports used for communication between machines in the same site or data store. For example, all machines in a single ArcGIS Server site or a single object store.

↑ Ports used for single direction communication between different components or sites.

↕ Ports used for inbound and outbound communication between different components or sites.